

EMB
Technology

Carrier Cleaning Device



*Designed for large volume
Carrier – Toner separation.*

WWW.EMB-Technology.com

CARRIER SEPARATION METHOD

This fully continues patented system for separating toner from carrier is suitable for 99% of current toners used in Laser printers today. The toner is transferred to a self-cleaning mesh-surface, by 0.5m² of continues electromagnetic brush movement.

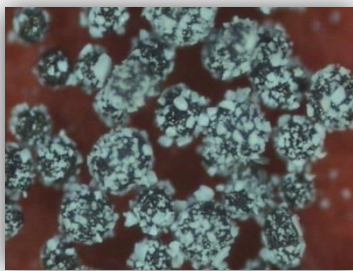
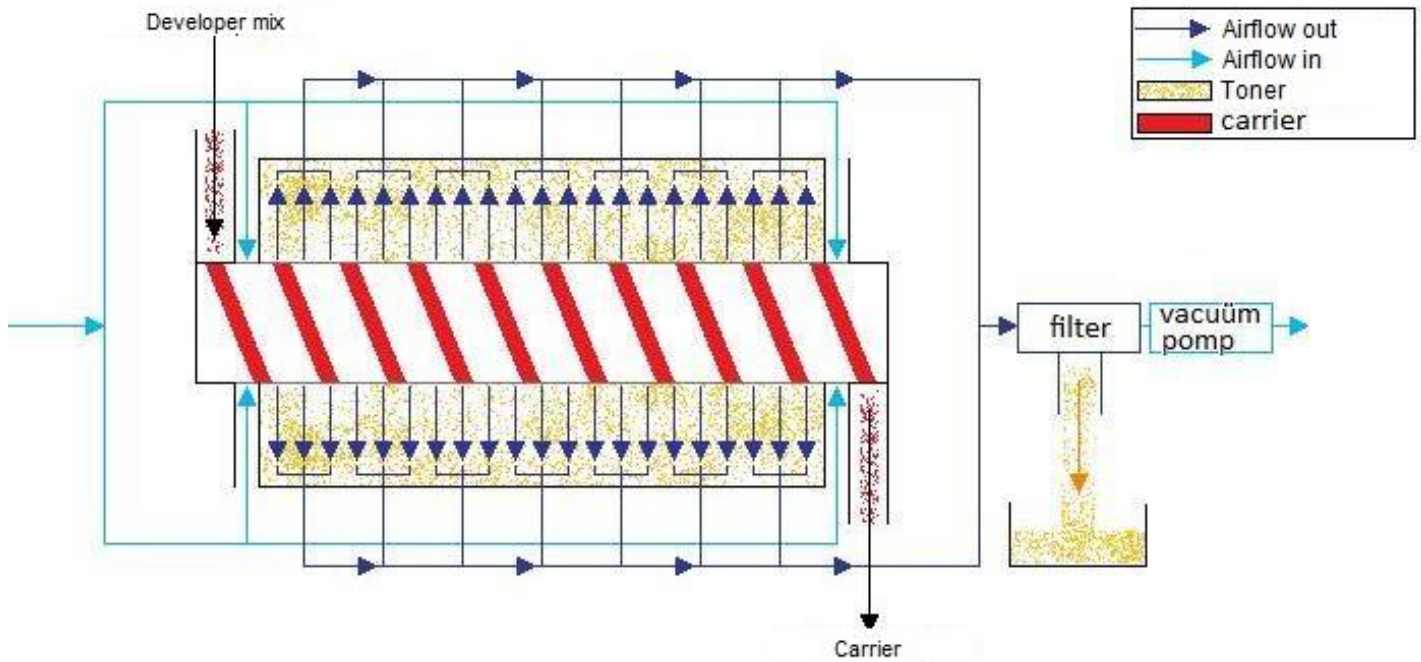


Figure 1 Developer



Figure 2 continues spiral brush

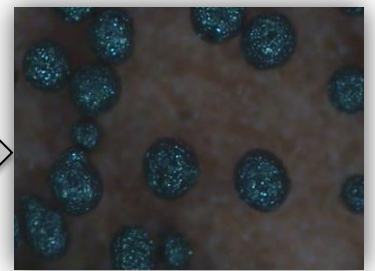


Figure 3 Carrier after separation

After the process the carrier is ready for recycling or re-use.

Technical specifications

Separationspeed*	150-300 gr/min
Cleaning efficiency*	99-99,9 %

*Speed and efficiency depending on carrier toner specification and combination. Lab. test show efficiency of 99.9% on tested developers.